

## Our approach to CPD

As dental professionals we have a duty to keep our skills and knowledge up to date. By undertaking CPD, the overarching aim is to maintain standards and protect patients. For full guidance on the GDC's requirements for CPD please refer to their website (link provided below).

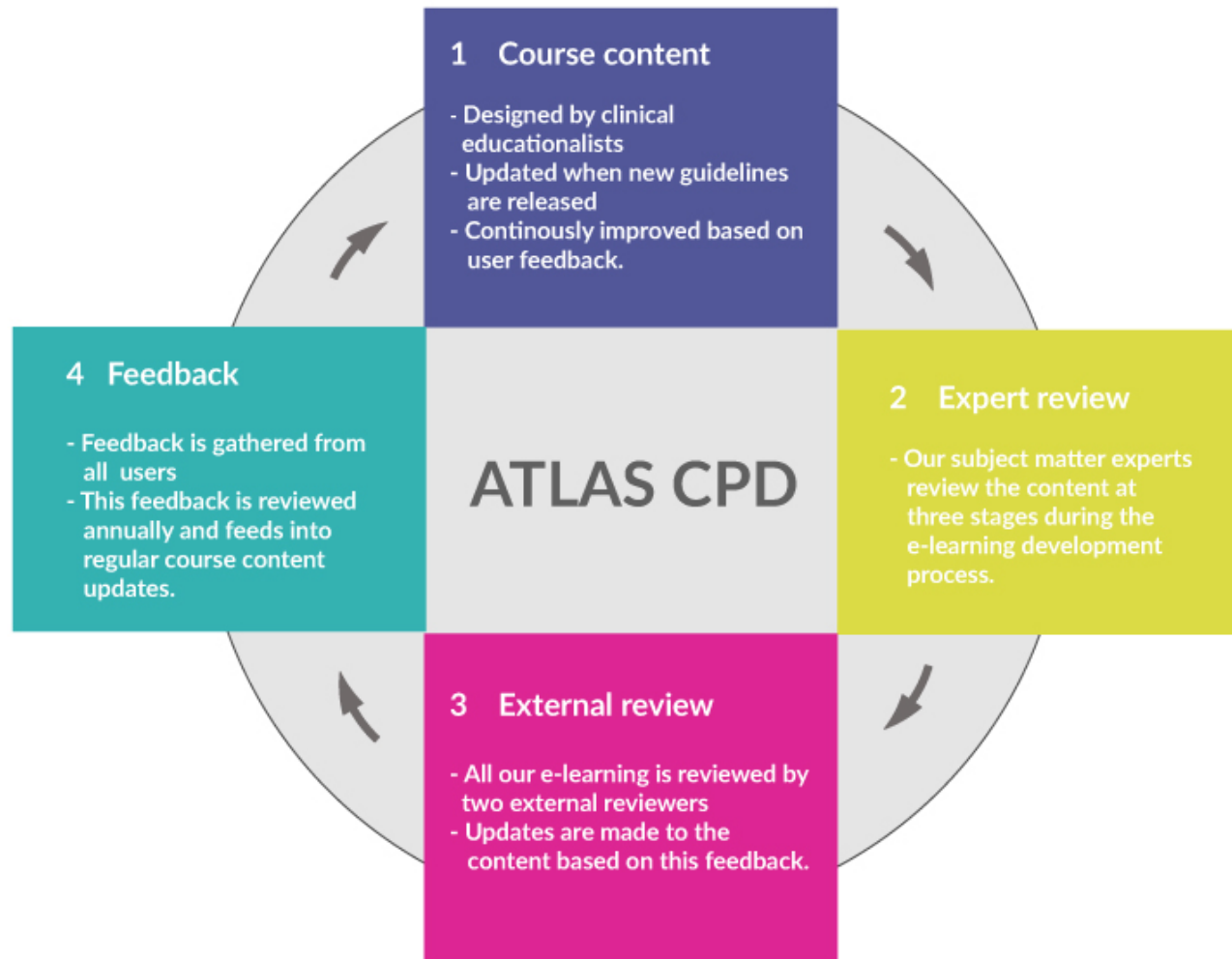
### **Why E-learning?**

The flexibility to complete CPD online means courses are available when it is convenient and when an update on a specific subject is required. Less time away from practice for core subjects means this time can be more effectively utilised for courses which lend themselves to face to face teaching, small group seminars or hands-on courses.

### **Our Quality Assurance Process**

As a provider of continuing professional development we aim to ensure our content is evidenced based and up to date with current guidelines. We have developed our learning approach based on the COPDEND framework (link provided below). Which means all our content has been developed in collaboration with a subject matter expert in the field alongside specialist educators to ensure the learning is relevant current and engaging. All our courses are peer reviewed and user tested before launch. We collate feedback from users and continually update our courses so they deliver a great user experience. Our full process for quality assurance is explained in the figure.

If you are audited by the GDC you may be asked to provide details of the quality assurance of the learning you have taken, so we have created this document, which can be printed and submitted with your ATLAS CPD certificates.



The General Dental Council website: <http://gdc-uk.org>

GDC Standards document: <https://www.gdc-uk.org/professionals/standards/team>

COPDEND framework: [http://www.copdend.org/data/files/Research/Dental\\_booklet\\_24pp.pdf](http://www.copdend.org/data/files/Research/Dental_booklet_24pp.pdf)